

PLEASE CHECK WWW.MOLEX.COM FOR LATEST PART INFORMATION

Part Number: [1300970273](#)
Status: **Active**
Overview: [brad wire mesh grips](#)
Description: Strain Relief Wide Range Dust Tight Grip, 2 1/2" NPT, Straight Female, Cable Diameter

Documents:

[Drawing \(PDF\)](#) [RoHS Certificate of Compliance \(PDF\)](#)

Agency Certification

CSA LR32159

General

Product Family Cable Grips
 Series [130097](#)
 Eye Type N/A
 Insulated Yes
 O-Ring No
 Overview [brad wire mesh grips](#)
 Product Name Dust-Tight
 Type Strain Relief Grips
 Woodhead Yes

Physical

Approximate Break Strength 1,000 lbs
 Bale Length N/A
 Body Style Straight
 Cable Diameter 41.15-50.80mm (1.620-2.000")
 Color - Grommet N/A
 Gender Female
 Material - Body Nylon
 Material - Grip Nylon
 Mesh Length 0.393m (1.29')
 Number of Holes N/A
 Strain Relief Force 35 lbs
 Thread Size 2 1/2" NPT

Material Info

Old Part Number 36518

Reference - Drawing Numbers

Sales Drawing SD-130097-002



image - Reference only

EU RoHS

**ELV and RoHS
Compliant**
**REACH SVHC
Not Reviewed**
**Halogen-Free
Status
Not Reviewed**

China RoHS



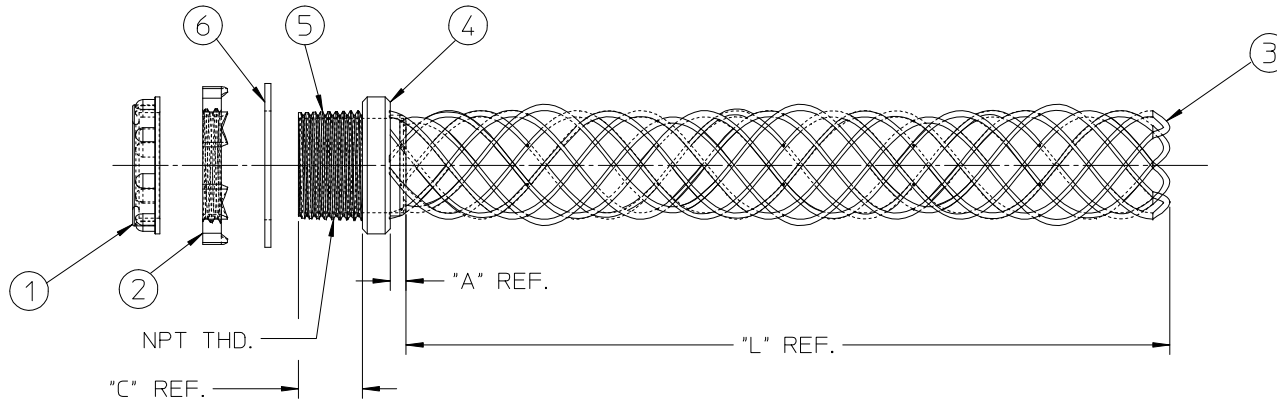
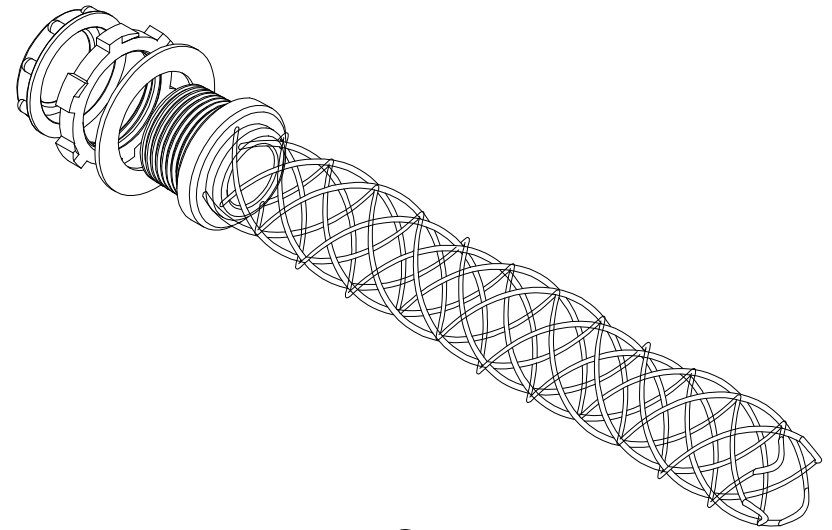
**Need more information on product
environmental compliance?**

Email productcompliance@molex.com
 For a multiple part number RoHS Certificate of
 Compliance, [click here](#)

Please visit the [Contact Us](#) section for any
 non-product compliance questions.

Search Parts in this Series
[130097Series](#)

| PART NUMBER | OLD PART NUMBER | CORD DIAMETER RANGE | FITTING SIZE NPT | BREAK STRENGTH | *A* DIMENSION | *L* | | *C* |
|-------------|-----------------|---------------------|------------------|----------------|---------------|----------------------|-------------------------|-----------|
| | | | | | | LENGTH REF. WITH ROD | LENGTH REF. WITHOUT ROD | |
| 1300970256 | 36501 | .22-.32/5.6-8.1 | 1/2" | 300 LBS | .109/2.77 | 4.00/101.6 | 4.50/114.3 | .65/16.5 |
| 1300970258 | 36503 | .30-.43/7.6-10.9 | 1/2" | 300 LBS | .109/2.77 | 4.50/114.3 | 4.75/120.7 | .65/16.5 |
| 1300970260 | 36505 | .40-.54/10.2-13.7 | 1/2" | 370 LBS | .109/2.77 | 5.50/139.8 | 6.00/152.4 | .65/16.5 |
| 1300970262 | 36508 | .52-.73/13.2-18.5 | 3/4" | 450 LBS | .109/2.77 | 6.50/165.1 | 7.50/190.5 | .67/17.0 |
| 1300970265 | 36512 | .70-.97/17.8-24.6 | 1" | 700 LBS | .109/2.77 | 8.00/203.2 | 9.25/234.9 | .82/20.8 |
| 1300970269 | 36515 | .94-1.25/23.9-31.8 | 1-1/4" | 700 LBS | .109/2.77 | 9.00/228.6 | 11.00/279.4 | .85/21.6 |
| 1300970271 | 36516 | 1.20-1.50/30.5-38.1 | 1-1/2" | 1400 LBS | .109/2.77 | 11.00/279.4 | 11.75/298.5 | .87/22.1 |
| 1300970272 | 36517 | 1.40-1.75/35.5-44.5 | 2" | 1400 LBS | .187/4.75 | 13.0/330.2 | 14.00/355.6 | .90/22.9 |
| 1300970273 | 36518 | 1.62-2.00/41.1-50.8 | 2-1/2" | 1400 LBS | .250/6.35 | 13.50/342.9 | 15.50/393.7 | 1.35/34.3 |
| 1300970274 | 36519 | 2.00-2.45/50.8-62.2 | 2-1/2" | 1400 LBS | .250/6.35 | 13.50/342.9 | 17.00/431.8 | 1.35/34.3 |



| 6 | 1 | GASKET (B) | NEOPRENE | BLACK |
|------|------|--------------------|-----------|-------------|
| 5 | 1 | THREADED BODY | ALUMINUM | NONE |
| 4 | 1 | OUTER RING | ALUMINUM | NONE |
| 3 | 1 | WIRE MESH ASSEMBLY | STEEL | GALVANIZED |
| 2 | 1 | LOCKNUT | STEEL | ZINC PLATED |
| 1 | 1 | BUSHING | NYLON 6/6 | GRAY |
| ITEM | QTY. | DESCRIPTION | MATERIAL | FINISH |

REV. TABLE DIMS. BOM
 ADDED GASKET
 EC NO: WNAZ009-0754
 DR: WAINSTONE 2009/05/15
 CHK: B. WOODMAN
 APPR: J. MURPHY 2009/06/10

QUALITY SYMBOLS
 ▽=0
 ▽=0

GENERAL TOLERANCES (UNLESS SPECIFIED)

| | mm | INCH |
|---------------|--------|---------|
| 4 PLACES | ± .005 | ± .0005 |
| 3 PLACES | ± .005 | ± .0005 |
| 2 PLACES | ± .01 | ± .001 |
| 1 PLACE | ± .03 | ± .001 |
| ANGULAR ±1/2° | | |

DRAFT WHERE APPLICABLE
 MUST REMAIN WITHIN DIMENSIONS

DIMENSION STYLE
 IN/MM

DRAWN BY DATE
 S. GARCIA 2009/03/18

CHECKED BY DATE
 B. WOODMAN 2009/03/18

APPROVED BY DATE
 J. MURPHY 2009/03/18

MATERIAL NO.

SCALE
 1:2

DESIGN UNITS
 INCH

THIRD ANGLE PROJECTION

TITLE
 WIDE-RANGE GRIP
 1/2 INSULATED

Molex MOLEX INCORPORATED

DOCUMENT NO.
 SD-130097-002

SHEET NO.
 1 OF 1